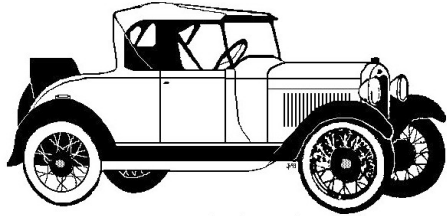


Ford Model A body styles

Almost two dozen body styles were available, not including commercial models. The models are standard and deluxe phaeton;



1929 Standard Roadster

standard and deluxe roadster; standard and deluxe coupe; standard and deluxe Tudor (2 door) sedan; standard and deluxe Fordor (4 door) sedan (Briggs/Murray) and Victoria. Coupe models included Sports and Business coupes. Others were the cabriolet, convertible sedan (A400), taxi cab, town car (limousine), station wagon, pick-up truck (various styles), AA truck (various styles), and commercial use vehicles.

What if I am not an experienced mechanic?

Interest in the car is more important than mechanical experience or aptitude. However, there is an extensive body of information available showing ways to repair, adjust, and operate this rather uncomplicated machine. Remarkably, fellow Model A owners enjoy helping others keep them operating.

Model A factoids

◆ The Model A Ford came out before the October 1929 Stock Market Crash and was manufactured through the Great Depression.

During this period, Henry Ford continued paying his workers \$5 a day.

◆ The 20 millionth Ford car was produced on April 14, 1931. It was a slant windshield Fordor (4 door) Model A. During 1928-1931, Ford produced 4.3 million Model A's.

OK, I am interested in learning more – where can I go?

Numerous Model A organizations support the hobby. Several are listed below:

Model A Ford Club of America (MAFCA)
<http://www.mafca.com>

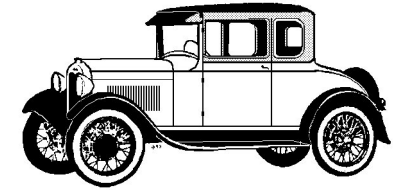
Model A Restorers Club (MARC)
<http://www.model-a-ford.org>

Model A Ford Foundation Incorporated (MAFFI)
<http://www.maffi.org>

Tell me about your club.

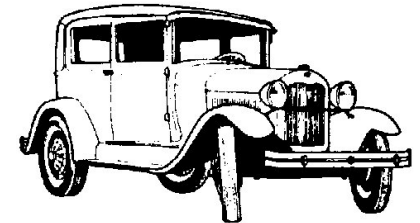
The Lone Star Model A Ford Club (LSMAFC) is based in Georgetown, Texas. Most of our members live in central Texas, but one is in Louisiana and another in New York. We meet each Saturday at 7:30 AM at the IHOP on the South IH35 access road in Georgetown. We also hold a monthly Membership Meeting the 2nd Sunday of most months at The Wesleyan at Estrella **Independent Living** center at 139 Estrella Crossing, in Georgetown, starting at 2:30 PM (Chautauqua Room, 3rd Floor). You do not have to own a Model A to belong to our club. If you have an interest in A's, we'd love to have you. Visit our website at ...

www.lonestarmaf.club



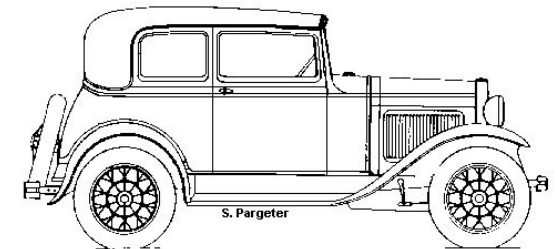
1929 Standard Coupe

The Model A Ford



1929 Tudor

1928-1931



1931 Victoria Coupe

Lone Star Model A Ford Club
Georgetown, Texas
www.lonestarmaf.club

Why do we care about a Model A?

The Model A was the next generation Ford car following the Model T. It provided America with economic transportation continuing a tradition established with the Model T, which was voted the #1 Car of the 20th Century. Henry Ford started the Ford Motor Company in 1903 and produced the Model T from 1908 to 1927. The Ford Model A production began in October 1927 and continued through March 1932.

Why is it called a Model A and not a Model U, the follow-on to the Model T?

In developing cars, Ford identified model design by a letter. Ford produced the first Model A in 1903, and it was followed by other models such the Model B and C (1905), the Model K and N (1906). They stopped changing the model number with the Model T. Ford wanted to break from tradition and begin anew. Initially, the Model A was simply called “the New Ford”. For some reason, they decided Model A was most apt. The 1932 cars had the first Ford V8 engine, available as an option. The 4 cylinder cars were called Model B. After that, the design changed each year, negating the need for naming models by letter.

How fast will it go?

A ‘stock’ Model A in good mechanical condition will cruise all day at 45-50 miles per hour. Modified cars with after-market overdrives can cruise at 60 mph or more depending on other modifications.

What are the features of the Model A?

- ◆ It has a 4 cylinder, water cooled, internal combustion engine that generates 40 horsepower.
- ◆ It has four wheel mechanical brakes.
- ◆ Excluding a good number of specialty models, there were about 2 dozen different models.
- ◆ Safety features included safety glass, brake light, bumpers, ammeter, and fuel gauges; fuel shut off in the passenger compartment, and others.

How much did they cost when produced and how much are they now?

When produced, a new Ford Tudor (2 door) Sedan cost from \$495-\$525. A roadster was the cheapest, ranging from \$435-\$520 depending on the year and options desired. The most expensive was the rare, Town Car (limousine) priced at \$1,200. Presently, one can purchase a running car, called a “driver” for \$8,000-\$12,000. Models that are more desirable cost more. Show cars can range from \$25,000 to \$40,000. Rare, original models cost the most. You can buy them on eBay, but carefully look over any car with the assistance of a knowledgeable person.

How does this car pass state emission and safety examinations?

If a car is registered using historical vehicle plates, it can be subject to different rules of use and safety standards.

Antique cars normally are only required to have the operating safety equipment and meet emission requirements that were in effect at the time of manufacture.

Why do people want to own Model A’s?

In addition to being a significant part of history, they are a novelty that brings a smile to many faces. They are simple to work on and fun for those who enjoy working on mechanical things. Car clubs offer camaraderie and appreciation of the era and its rich history. Many Model A owners drive cars handed down by their families over generations. Many owners participate in community events such as parades and car shows. Others enjoy touring the countryside in these venerable machines.

Where can you find parts for Model A’s?

Surprisingly, it is not too hard to find parts. Many reproduction parts and specialty supply companies offer new or reconditioned car parts. One can purchase items such new bodies or fenders for different models. Other companies rebuild engines, transmissions and other components. There are many clubs nationwide, and members frequently help one another in restoring or repairing these cars. Flea markets and swap meets often yield parts.

Are these cars still available to potential buyers?

Yes. Some estimate that 250,000 Model A’s still exist, some complete cars, others in various stages of (dis)assembly. Antique car publications and sometimes newspapers list Model A’s for sale.